

# ChatGPT: Revolutionizing Communication with AI

ChatGPT is an AI-powered tool that uses Natural Language Processing to generate responses that simulate human conversation. It's a revolutionary tool that has transformed the way people communicate.



# The Underlying Technology

## Natural Language Processing

Through this technology, ChatGPT can interpret human language patterns and generate relevant responses.

1

2

3

## Artificial Intelligence

ChatGPT is powered by advanced AI algorithms that deliver human-like responses to user queries.

## Machine Learning Models

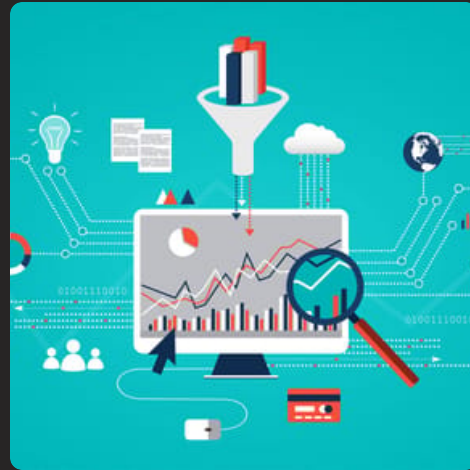
The system is trained using vast amounts of data, allowing ChatGPT to continually improve its responses over time.

# Training the Model: An Exceptional Learning Curve



## Structure

The model is built using a multi-layer neural network structure to mimic human thinking.



## Data Processing

ChatGPT uses large amounts of data to train and improve the system.



## Finetuning

The system continually adjusts itself to improve performance based on user feedback and preferences.

# The Applications of ChatGPT

## Customer Service

ChatGPT can provide quick and personalized customer support, improving customer satisfaction and reducing workload for customer service teams.

## Language Translation

By using NLP technology, ChatGPT can accurately translate text between languages, allowing for seamless communication in our increasingly globalized world.

## Content Creation

ChatGPT can generate high-quality content for various platforms, such as social media posts, emails and blog posts, saving time and energy for content creators.

## Personal Assistance

ChatGPT can assist individuals in scheduling, setting alarms, reminders, and other day-to-day organizational tasks as a personal assistant.

# The Current Boundaries of ChatGPT

1

## Language Limitations

ChatGPT is limited in its current ability to interpret and respond to non-English languages, but there's ongoing research to address this challenge.

2

## Bias and Misinformation

AI systems like ChatGPT are susceptible to bias and can produce misinformation if not correctly trained.

3

## Contextual Understanding

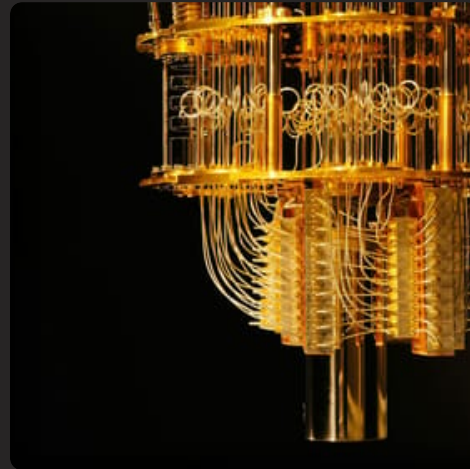
ChatGPT's performance can be limited by its lack of understanding of contextual and background information, which can affect the accuracy and relevance of its responses.

# The Future of ChatGPT



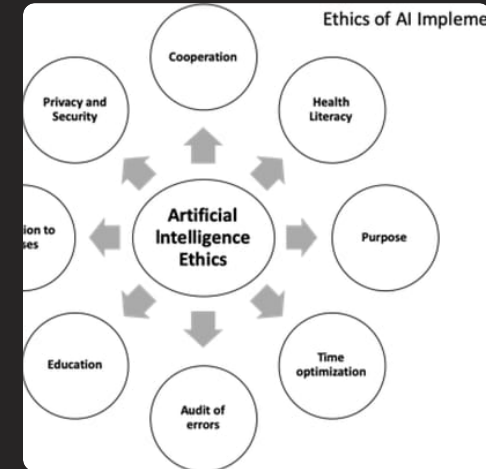
## Advanced NLP

ChatGPT's future lies in advanced Natural Language Processing technologies, which can result in more accurate and relatable responses.



## Quantum Computing

Quantum computing can significantly improve the way we train and develop the ChatGPT model using more data and processing power.



## AI Governance

Controlling and managing AI-generated content and data is essential, and ethical regulations will be crucial in the future development and implementation of ChatGPT.

# The Impact of ChatGPT

## 1 Streamlined Communication

ChatGPT facilitates quick communication and delivers relevant information, making it easier for individuals and businesses to connect with others.

## 2 Cutting-edge Innovations

ChatGPT is a game-changer in the AI industry, and advances in AI technology are helping us come closer to building intelligent and human-like machines.

## 3 Limitations and Challenges

ChatGPT is not a perfect system and has limitations and challenges in its current state. However, continued innovation and research strive to develop and improve the technology.



# Conclusion

## The Future

The continued development of ChatGPT, driven by the exponential growth of AI technologies, will provide better and more nuanced communication experiences.

## The Boundaries

We must always be mindful of the ethical and technological limitations inherent in AI systems like ChatGPT, ensuring that their development is always aligned with human interests and values.